

**Tortricidae (Lepidoptera) from the Tervuren Museum,
1: Tortricini and Chlidanotini**

JÓZEF RAZOWSKI

Institute of Systematics and Evolution of Animals PAS, Sławkowska 17,
31-016 Kraków, Poland, e-mail: Razowski@isez.pan.krakow.pl

ABSTRACT. Twelve species are treated; one genus (*Congoprinsia* gen. n.) and nine species (*Paraccra chorogiae* sp. n., *Panegyra sokokana* sp. n., *Cornesia arabuco* sp. n., *Congoprinsia juratae* sp. n., *Apotoforma mayumbeana* sp. n., *A. kakamegae* sp. n., *Acleris cameroonana* sp. n., *Xeneboda congo* sp. n., *X. mayumbea* sp. n.) are described as new.

KEY WORDS: Tortricidae, Tortricini, Chlidanotini, new genus, new species, faunistics, Afrotropical.

INTRODUCTION

This contribution constitutes the first in a series of papers devoted to the Tortricidae in the collection of the Royal Museum for Central Africa (RMCA). The papers are intended to be published in two journals – SHILAP and the Polish Journal of Entomology. This paper deals with the tribes Tortricini (Tortricinae) and Chlidanotini (Chlidanotidae), both of which are poorly represented in the Afrotropical region. The material studied was collected in the Democratic Republic of Congo and in Kenya.

Acknowledgements

The author expresses his gratitude to the authorities of the Royal Museum for Central Africa, Tervuren, represented by Dr Jurate De Prins, who provided this large, valuable collection for study. Thanks are due to Mr Witold Zajda of Kraków for taking the photographs and arranging the plates. Special thanks also go to the anonymous reviewer for the textual corrections.

SYSTEMATICS

Tortricini

Paraccra chorogiae sp. n.

(Figs 11, 20)

Diagnosis

This species is closely related to *Paraccra mimesa* RAZOWSKI, 2005 from Tanzania, but *chorogiae* lacks the subapical red fascia, has a pale ochreous head, and the cup-shaped part of the sterigma is broad. The shapes of the bursa copulatrix, especially its sacs and sclerite, are similar in the two species.

Description

Wing span 16 mm. Head and proximal part of thorax pale orange, labial palpus yellower; otherwise thorax dark grey. Forewing rather uniformly broad throughout; termen weakly oblique, straight. Ground colour dark grey; costa, apex and costal half of termen pale orange, costa with black dots. Red markings: two elongate marks in basal area followed by curved fascia consisting of three parts and almost straight, slightly oblique fasciae; median and subterminal fasciae bent. Cilia dark yellow. Hindwing dark brown; cilia paler, more greyish.

Male not known.

Female genitalia (Fig. 11). Ovipositor somewhat elongate; apophyses long, slender; cup-shaped part of sterigma rather short, lateral parts slender; ductus bursae moderately broad; ductus bursae extending from large sac at base with an elongate, curved sclerite and numerous thorns; shorter, elongate sac opposite the latter.

Material examined

Holotype female: "Coll. Mus. Tervuren, Kenya, Mount Kenya, Chorogia 1600 m, 00.14'S 37.35'E (M8/08), 13-14. IV. 2001, leg Dr. U. Dall'Asta, Coll. Mus. Tervuren"; GS 00548.

Etymology

The name refers to the name of the type locality.

Panegyra sokokana sp. n.

(Figs 1, 2, 21)

Diagnosis

Panegyra sokokana is very closely related to *P. metria* RAZOWSKI, 2005 from Aburi, Ghana, but *sokokana* has broad socii, a broad and well sclerotized transtilla, a long costa of the valva, and a broad aedeagus.

Description

Wing span 11 mm. Head and proximal part of thorax yellow orange, remaining parts grey. Forewing broadest submedially; termen indistinctly oblique. Costal area and termen yellow, the former more orange along edge with a few blackish dots. Remaining surface grey with 6 transverse red lines; terminal area edged by another curved red line and a red spot at apex. Cilia yellow. Hindwing brownish grey with darker scaling on veins; cilia cream, brown scaled.

Male genitalia (Figs 1, 2). Socius large, well sclerotized; valva broad with long costa and broad brachiola; sacculus with long dorsal sclerite; transtilla broad; aedeagus broad.

Female not known.

Material examined

Holotype male: "Coll. Museum Tervuren, Kenya: Arabuko Sokoke Mixed Forest 1/12/2000 alt. 253 m, 03.19S 39.59E (J7), Ugo Dall'Asta"; GS 00550.

Etymology

The name refers to the type locality.

***Cornesia ormoperla* RAZOWSKI, 1981**

(Figs 12, 22)

Material examined

One female from Eala, VI. 1935, J. Ghesquière leg., GS 00571.

Remarks

C. ormoperla was described from a female from Nigeria; RAZOWSKI (2005) subsequently recorded it from South Africa and described the male genitalia. Among the material examined is a female from Eala, Congo, which is yellower than the type and has a much shorter ductus bursae (proportion of the ductus bursae to the length of signum is 3.4 whereas in the type it is 7.7), and the cup-shaped sterigma is hardly expanded laterally. In another species (*C. arabuco*) this ratio is 5.5. Because the males of the South African and Congolese species are quite different from each other, one can assume that the females show very slight differences, hence the identification of the South African examples may be doubtful.

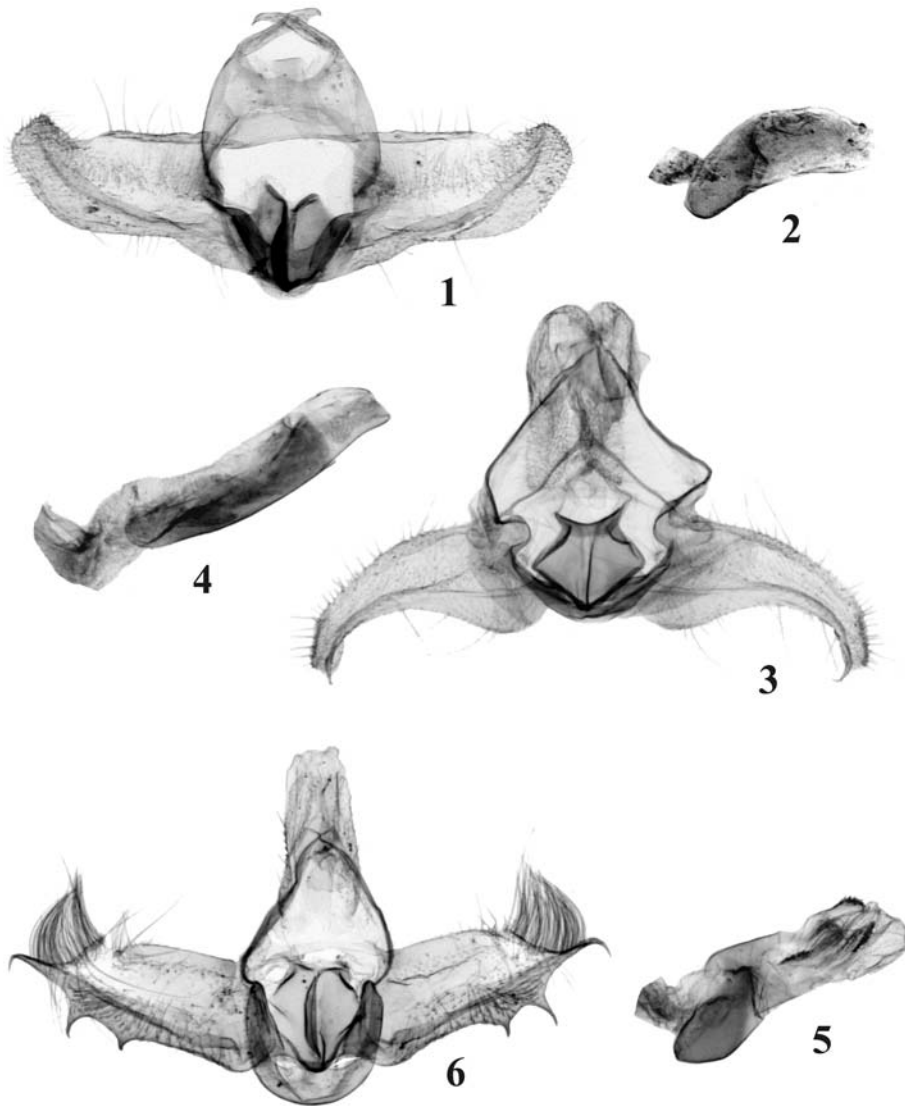
The female genitalia of the specimen from Congo are illustrated (Fig. 12) for comparison. The systematic position should be confirmed with additional material.

***Cornesia arabuco* sp. n.**

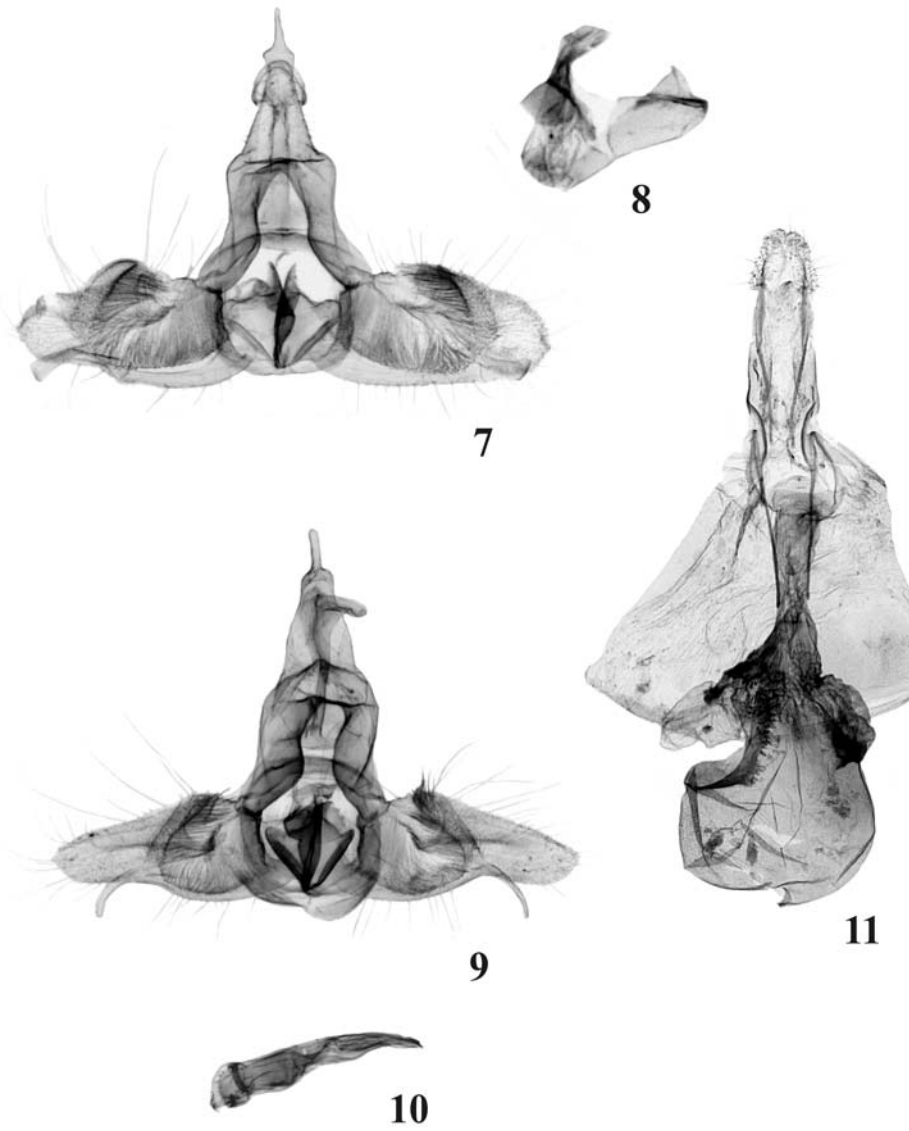
(Figs 3, 4, 13, 23)

Diagnosis

This species is very close to *C. ormoperla*, as the female genitalia show, but *arabuco* has a shorter signum and ductus bursae. It differs from the male of *ormoperla* (RAZOWSKI 2005) in having larger socii and a distinctly convex base of the sacculus.



Figs 1-6. Male genitalia: 1, 2 – *Panegyra sokokana* sp. n., holotype, 3, 4 – *Cornesia arabuco* RAZOWSKI, paratype, 5, 6 – *Congoprinsia juratae* sp. n., paratype.



Figs 7-11. Male and female genitalia: 7, 8 – *Apotoforma mayumbeana* sp. n., paratype, 9, 10 – *Apotoforma kakamegae* sp. n., holotype, 11 – *Paraccra chorogiae* sp. n., holotype.

Description

Wing span 15 mm. Head and thorax cream with brown admixture. Forewing not expanding terminad; costa distinctly convex, termen less so. Ground colour white-cream, sprinkled and suffused pale grey-brown; suffusions browner; some refractive pearly scales present. Markings ill-defined (subterminal fascia and costal part of median fascia are most distinct), brownish with black dots and marks. Cilia paler than ground colour with some brown scales. Hindwing brownish; cilia paler, yellower.

Variation. Suffusions and marks blackish, strigulation more or less dark and distinct.

Male genitalia (Figs 3, 4). Tegumen beyond bases of pedunculi short with small prominences; socius very large with posterior part much slenderer than the anterior part; valva and sacculus broad basally; the latter sinuate, terminating in a sharp process; transtilla membranous; aedeagus large with short ventral termination and broad carina.

Female genitalia (Fig. 13). Cup-shaped part of sterigma proportionally short, slightly expanding in proximal part laterally; ductus bursae long; signum small with base as long as the blade.

Material examined

Holotype male: "Coll. Museum Tervuren, Kenya: Arabuko Sokoke 22/08/1999 (PS) Mixed Forest, U. Dall'Asta Hg+Hal."; GS 00556. Paratypes 4 males and 1 female with identical labels, female with GS 00657.

Etymology

The specific name refers to the type locality.

Congoprinsia gen. n.

Type species: *Congoprinsia juratae* sp. n.

Diagnosis

The male genitalia in this new genus are closest to those of *Cornesia* RAZOWSKI, 1981, in that they have a similar tegumen, socii and valva. In contrast, the female genitalia are quite different, especially in the shape of the signum, which consists of a smooth H-shaped sclerite. The female genitalia also differ from *Cornesia* in the sclerite of the antrum and the large, bulbous posterior part of the ductus bursae, which in *Cornesia* is slender and forms a sclerotized cup.

Description

Labial palpus short, broad (ca 1.5 diameter of the eye). Facies cryptic, without red elements, with two well-developed posterior fasciae. Forewing slender, with R5 to termen beneath apex, R4-R5 approaching basally, distance between M3-M4 twice that between M1-M2 at base, CuA2 opposite mid-distance R1-R2; chorda ill-defined; M-stem absent. In hindwing Rr-M1 approaching basally, M2-M3 strongly approaching at base.

Male genitalia. Pedunculi slender; terminal part of tegumen weakly sclerotized; socii long, sparsely hairy; vinculum simple, fairly broad; costa of valva long; sacculus with ventral and terminal processes; spined termination long, densely hairy; transtilla membranous; juxta large, folded medially; aedeagus broad with well-developed coecum penis and three posterior elongate sclerites armed with thorns.

Female genitalia. Ovipositor short; papilla analis broad, rather short, hairy; sterigma plate-shaped, convexly rounded proximally with large ostium, partly protected by a slender sclerite; posterior half of ductus bursae very broad; ductus seminalis originating in the proximal convexity of the latter; signum consisting of two longitudinal sclerites connected medially by a slender belt.

Etymology

The genus is named after Jurate and Willy De Prins, who have made significant contributions to our knowledge of the Ethiopian Lepidoptera, especially that of Congo.

***Congoprinsia juratae* sp. n.**

(Figs 5, 6, 14, 24)

Diagnosis

This species is the only representative of its genus. In facies it resembles *Nephograptis necropina* RAZOWSKI, 1981; the male genitalia are close to those of *Cornesia ormoperla* RAZOWSKI, 1981 (both from Nigeria), but *juratae* has two ventral processes of the tegumen.

Description

Wing span 14.5 mm (males 12–13 mm). Head and thorax pale ferruginous. Forewing slender weakly expanding to middle; costa bent medially; termen weakly oblique, somewhat convex. Ground colour ferruginous cream; suffusions and strigulation rust, a few paler spots in a reticulate area subterminally; costa and termen spotted rust; markings rust brown with dark brown parts consisting of basal blotch represented by a median streak, median fascia and subterminal fascia. Cilia concolorous with ground colour. Hindwing brownish grey, paler, tinged cream apically; cilia creamier.

Variation. Males with weaker, fewer brown markings.

Male and female genitalia (Figs 5, 6, 14) as described for the genus.

Material examined

Holotype female: "Congo Dem[ocratic] Rep.[ublic] Bas-Congo 320 m, N.R. Luki-Mayumbe 05.37'S 013.05' E, 23. V. 2007, leg. J. & W. De Prins"; GS 00436. Paratypes 8 males from same locality dated 29. III. 2006, coll. J. De Prins; 22. III. 2006, 16. V. 2007, and 23. V. 2007 (three with GS 00409, 00437, 00471).

Etymology

The name is a patronym for Jurate De Prins, the collector of this species.

Apotoforma mayumbeana sp. n.

(Figs 7, 8, 15, 25)

Diagnosis

A. mayumbeana is closely related to *A. uncifera* RAZOWSKI, 1964 from Cameroon and *A. kakamegae* from Kenya. All three species have a broad terminal part of the subscaphium, but *mayumbeana* and *kakamegae* have a long apical process of the tegumen and a large aedeagus.

Description

Wing span 10 mm. Head brown grey, labial palpus cream; thorax greyish, creamier posteriorly. Forewing oval; costa distinctly convex at base, then weakly so; termen convexly rounded. Ground colour cream with slight brownish admixture, brownish strigulae, and brown dots; base of costa grey; median fascia diffuse brownish, atrophying in dorsal half; subterminal fascia concave proximally, brownish with blackish diffused marks. Cilia (worn) pale brownish. Hindwing pale brownish; cilia creamier.

Male genitalia (Figs 7, 8). Uncus large expanding subterminally with long apical process; socius absent; subscaphium rod-like with large semicircular termination; valva broad with very short costa; long sacculus terminating in broad posteriorly ventral process and long spined termination; brachiola very broad; aedeagus rather large, as long as uncus.

Female genitalia (Fig. 15). Proximal part of papilla analis rounded; cup-shaped sterigma short, broad, proximal lobes large, tapering terminally; ductus bursae slender; ductus seminalis originating in distal part of corpus bursae; signum absent.

Material examined

Holotype female: "Congo, Dem. Rep. Bas-Congo, 320 m, Luki-Mayumbe N.R., 29. III. 2006, leg. J. De Prins"; GS 00542. Paratype male: "Col. Mus. Congo Elisabethville, IV-V. 1952, Ch. Seydel"; GS 00554.

Etymology

The species name refers to the type locality.

Apotoforma kakamegae sp. n.

(Figs 9, 10, 26)

Diagnosis

A. kakamegae is closely related to *A. mayumbeana*, but *kakamegae* can be distinguished by its cream frons, shorter aedeagus, slender ventral termination of the sacculus, and spined basal termination of the sacculus.

Description

Wing span 14 mm. Head cream except for vertex which is brown; thorax white cream with brown base of tegula. Forewing as in *mayumbeana*. Ground colour whitish cream

sprinkled and dotted brown; costa with similar spots and strigulae. Markings ill-defined, brown, consisting of remnants of median and subterminal fascia; the latter concave proximally, diffuse posteriorly, followed by pale interfascia. Cilia worn. Hindwing brown cream; cilia concolorous.

Male genitalia (Figs 9, 10). Top of uncus long; subscaphium large, well sclerotized; valva broad basally; sacculus slender with slender ventral termination and large spined termination tapering basally; brachiola long, tapering terminally; aedeagus short, broad.

Female not known.

Material examined

Holotype male: "Col. Mus. Tervuren, Kenya Kakamega Forest 1575 m, 00.20'N 034.52'E, 16. X. 2001, leg. Dr. U. Dell'Asta"; GS 00555.

Etymology

The specific epithet refers to the type locality.

***Acleris kinangopana* RAZOWSKI, 1964**

Material examined

Five males from Kenya (Aberdares 2980 m, National Park Karuru Falls, 12. IV. 2000, Ugo Dall'Asta leg.).

Remarks

This species was described from Mt. Aberdare, East Africa and is probably widely distributed in this region. It forms a small compact group with a few other species, i.e., *A. thylacitis* MEYRICK, 1920, same locality; *A. rubi* RAZOWSKI, 2005 from Transkei, South Africa; *A. phanero crypta*, DIAKONOFF, 1973 from C. Madagascar; *A. malagassana* DIAKONOFF, 1973, same region; and *A. cameroonana* sp. n. from Mt. Cameroon.

***Acleris rubi* RAZOWSKI, 2005**

Remarks

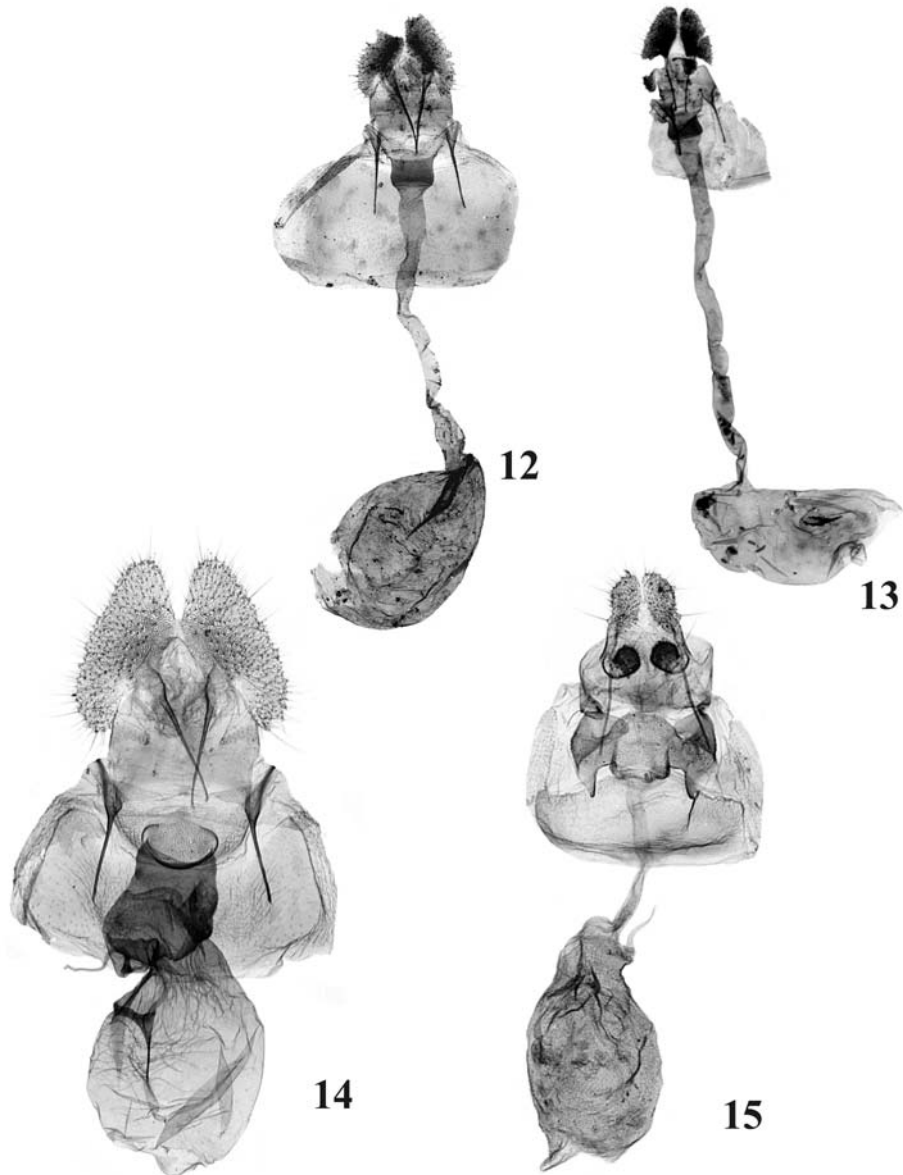
In RAZOWSKI (2005) I provided the description of the female genitalia of *rubi*, but unfortunately the illustration was missing; it is now shown in Fig. 16.

***Acleris cameroonana* sp. n.**

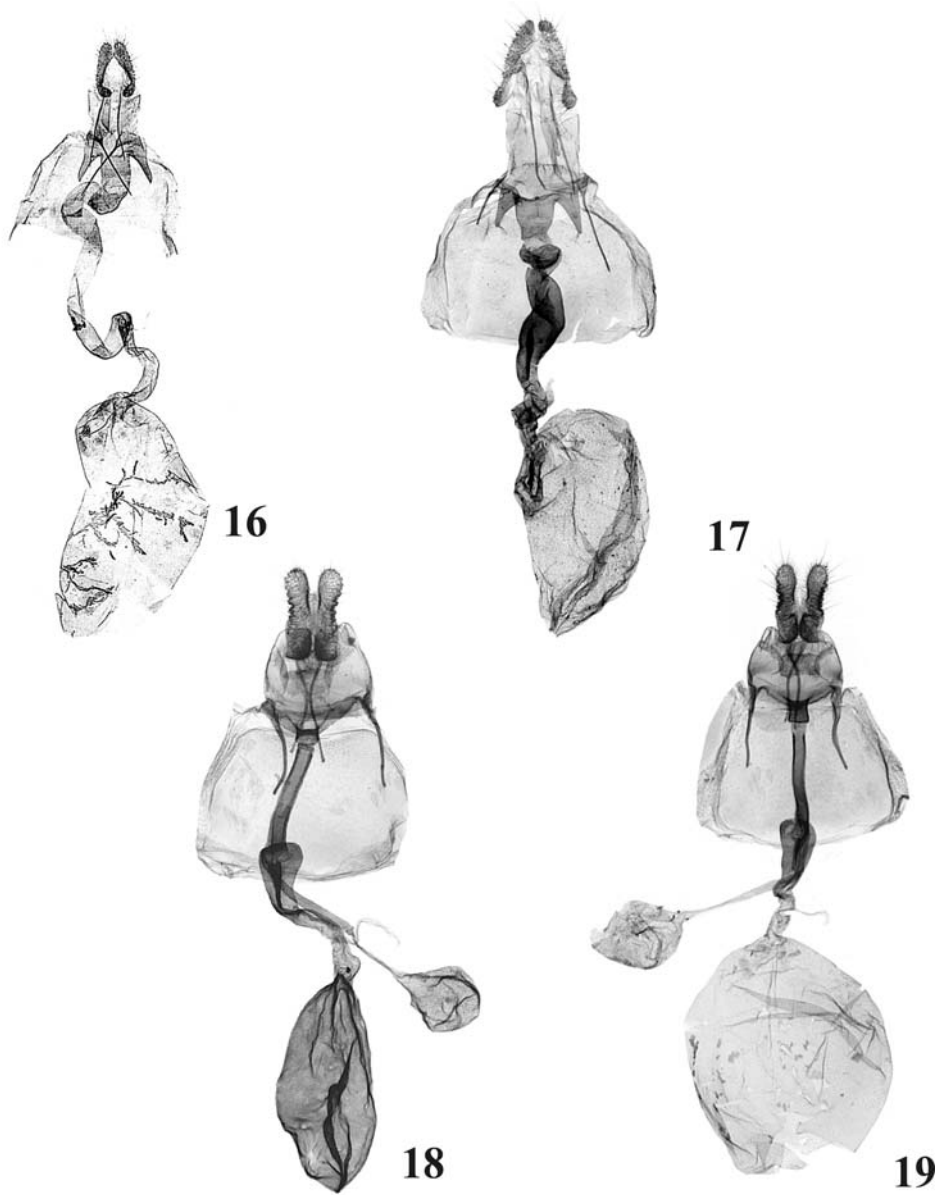
(Figs 17, 27)

Diagnosis

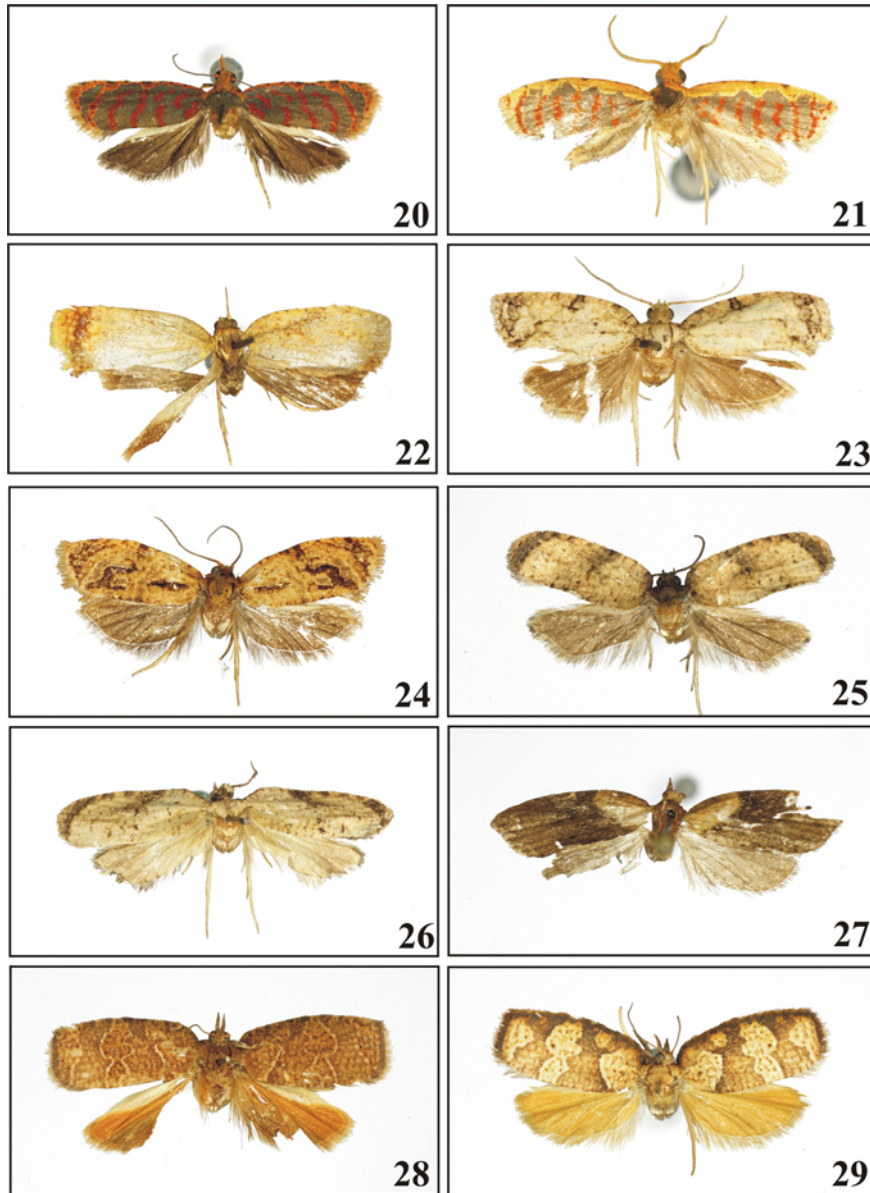
A. cameroonana is closely related to *A. rubi*, but *cameroonana* has a longer signum and a broader, shorter ductus bursae.



Figs 12-15. Female genitalia: 12 – *Cornesia ormoperla* RAZOWSKI, Eala, Congo, 13 – *Cornesia arabuco* sp. n., paratype, 14 – *Congoprinsia juratae* sp. n., holotype, 15 – *Apotoforma mayumbeana* sp. n., holotype.



Figs 16-19. Female genitalia: 16 – *Acleris rubi* RAZOWSKI, paratype, 17 – *Acleris cameroonana* sp. n., holotype, 18 – *Xeneboda congo* sp. n., holotype, 19 – *Xeneboda mayumbea* sp. n., holotype.



Figs 20-29. Adults: 20 – *Paraccra chorogiae* sp. n., holotype, 21 – *Panegyra sokokana* sp. n., holotype, 22 – *Apotoforma ormoperla* RAZOWSKI, Eala, Congo, 23 – *Cornesia arabuco* sp. n., holotype, 24 – *Congoprinsia juratae* sp. n., holotype, 25 – *Apotoforma mayumbeana* sp. n., holotype, 26 – *Apotoforma kakamegae* sp. n., paratype, 27 – *Acleris cameroonana* sp. n., holotype, 28 – *Xeneboda congo* sp. n., holotype, 29 – *Xeneboda mayumbea* sp. n., holotype.

Description

Wing span 23 mm. Head brown-cream, labial palpus blackish terminally; thorax (worn) probably concolorous with head. Forewing not expanding terminad, broadest medially; costa uniformly convex; termen weakly oblique, somewhat sinuate. Ground colour cream forming a large basal blotch suffused brown along costa; remaining part of wing greyish brown, darker towards basal area, with a few black dots in median part, paler terminally than medially. Cilia worn. Hindwing cream, brownish from middle, darkening on periphery; cilia brownish cream.

Male not known.

Female genitalia (Fig. 17). Sterigma convex posteriorly with elongate-triangular proximal lobes; cup-shaped part sclerotized, fairly large; ductus bursae broad in median part, slender proximally; signum elongate, thorny.

Material examined

Holotype female: "Collection Mus. Tervur. [en] (X), Mt. Cameroon Man's spring, 97.1'E 48.5'N, 08/02/89 night 19.00-06.30/21800 m, S. side Mt. Cameroon near Dr. Edwards plot 200 m from tree line. In middle of thick vegetat."; GS 00552.

Etymology

The specific epithet refers to the type locality.

Chlidanotini

The Chlidanotini are represented in this collection by a single species. *Xeneboda* RAZOWSKI & TUCK, 2000 was described as a genus closely related to *Ebodina* DIAKONOFF, [1968], known from this region by a single species from Madagascar. RAZOWSKI & TUCK (2000) provide the data on those two genera.

***Xeneboda congo* sp. n.**

(Figs 18, 28)

Diagnosis

X. congo is closely related to *X. kumasiana* RAZOWSKI & TUCK, 2000 from Kumasi, West Africa. *X. congo* can be distinguished chiefly by the long sclerite of the antrum, the lateral parts of the sterigma tapering terminad, and the bulbous posterior part of the membranous ductus bursae.

Description

Wing span 16.5 mm. Head and thorax pale ferruginous. Forewing broadest medially; costa strongly convex at base then less so; termen straight to middle, convex. Ground colour ferruginous cream densely strigulate and reticulate rust, with brownish termen, parts of costa and dorsum; costa spotted brown; four white lines across the wing representing

remnants of atrophied markings. Cilia yellowish cream, brownish basally and at tornus. Hindwing orange, brownish in anal area; cilia cream, tinged orange basally.

Male not known.

Female genitalia (Fig. 18). Papilla analis fairly long, slender; apophyses posteriores long, slender; apophyses anteriores much shorter; sterigma half-moon-shaped, rounded proximally with two slender ribs from end of the cup-shaped part; the latter short, well sclerotized, membranously separated from long sclerite of ductus bursae which probably represents antrum; bulbous sack at proximal end of sclerite with origin of accessory bursa; ductus seminalis extending from 1/4 of membranous proximal part of ductus bursae; signum absent.

Material examined

Holotype female: "Congo Belge: P.N.A., 11-IV. 1957, Vanschuytbroeck VS 50; Secteur Nord Mount Muhete, riv. g. Talya, 1.380 m, piège lumineux"; GS 00546.

Etymology

The specific epithet is based on the name of the country.

***Xeneboda mayumbea* sp. n.**

(Figs 19, 29)

Diagnosis

X. mayumbea is closely related to *X. kumasiana* and *X. congo*, but *mayumbea* has the postmedian interfascia expanding dorsad, the hindwing entirely yellow orange, and the sclerite of the antrum much longer.

Description

Wing span 8.5 mm. Head cream, slightly mixed brown-grey, end of labial palpus brown; thorax similarly coloured but mixed with yellow proximally. Forewing as in *X. congo*. Ground colour yellowish cream, yellower costally; dots and strigulae brownish orange. Markings more brownish than ground colour, partly paler, reticulate brown-orange, edged brown proximally, dark brown towards costa. Costa spotted dark brown, termen concolorous, paler tornally. Postbasal and submedian fasciae fused from beyond costal area; subterminal fascia constricted subcostally. Hindwing yellow orange; cilia much creamier.

Male not known.

Female genitalia (Fig. 19) as in *X. congo* but sclerite of antrum (cup-shaped sterigma?) longer, somewhat expanding proximad; postmedian sclerite of ductus bursae slender; median part of the latter broad with small inner sclerite.

Material examined

Holotype female: "Congo, Dem.[ocratic] Rep.[ublic], Bas-Congo, 320 m, Luki-Mayumbe N.R., 22. III. 2006, leg. J. De Prins"; GS 00614.

Etymology

The name refers to the type locality.

REFERENCES

- RAZOWSKI J. 2005. Tortricidae (Lepidoptera) from South Africa. 1: Tortricini and Cochylini. *Polskie Pismo Entomologiczne* **74**(4): 495-508.
- RAZOWSKI J., TUCK K.R. 2000. Revision of *Ebodina* DIAKONOFF, [1968], with description of two new species and one allied genus (Lepidoptera: Tortricidae). *Polskie Pismo Entomologiczne* **69**(1): 77-86.

Received: February 8, 2012

Accepted: April 12, 2012